

PROTECTING THE WORLD
FROM THE GROUND UP.

Composite Matting Solutions for the Construction Industry





PROTECT YOUR JOB SITE, EQUIPMENT AND PERSONNEL WITH SIGNATURE'S REUSABLE COMPOSITE MATTING SYSTEMS

Stay on Schedule with a Safe, Stable and Clean Work Site

Signature Systems understands your daily challenges: tight scheduling that can't wait for weather delays, higher project costs, labor shortages and changing environmental and safety requirements.

We engineer and manufacture industry-leading construction matting solutions for any size construction site to meet your critical needs.

- ✓ Keep your personnel safe with stable working platforms and staging areas.
- ✓ Build temporary roadways and provide reliable access to remote worksites.
- ✓ Spend less time and money on site preparation and remediation.
- ✓ Avoid costly repairs by protecting your equipment against the environment.
- ✓ Reuse across multiple worksites without fear of cross-contamination.





Heavy-duty Work Platforms



Staging Areas for Vehicles and Equipment



Portable Ground Protection for Vehicle Access

MEGADECK® HD+

WITH MDX CONNECTION SYSTEM

Heavy-duty temporary roadways, work platforms and laydown yards



ALSO AVAILABLE WITH S² LOCK™ CONNECTION SYSTEM



SIZE:

7.5 ft L x 14 ft W x 4 in H
(2.3 m x 4.3 m x 10.16 cm)

WEIGHT:

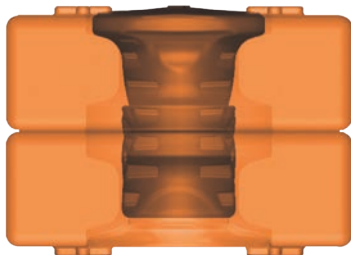
1,025 lbs. ea. (464.9 kg ea.)

LOAD CAPACITY:

4,500 tons / 600 psi

SQUARE FOOTAGE/40' ISO HC:

3,380 ft² (314 m²)



MDX

PINNING SYSTEM

LOCKING SYSTEM FOR
MEGADECK® HD+

Signature Systems' advanced MDX pin features a high strength, aluminum alloy pin core encased in a strong, highly engineered plastic case that facilitates faster and easier installation while handling the most extreme loads and impacts.

COMPOSITE

10-12 years

Does not absorb water and contaminants

MegaDeck® HD+ 42
SignaRoad® 90



LIFESPAN

ENVIRONMENTAL IMPACT


MATS PER TRUCKLOAD

WOOD


3-5 years

Absorbs water and contaminants


18-21 2 & 3-plywood mats
45 Traditional mats



Trackout System for
Site Entrances and Exits



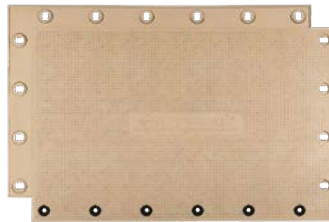
Heavy-haul Accessways



Temporary Roadways for Work
Crews and Vehicles

SIGNAROAD®

Medium-duty composite
matting for temporary roadways
and site access



SIZE:

6.8 ft L x 10 ft W x 2.5 in H
(2.1 m x 3 m x 6.4 cm)

WEIGHT:

496 lbs. ea. (225 kg ea.)

LOAD CAPACITY:

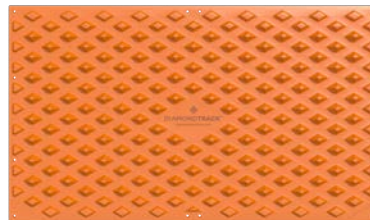
1,950 tons / 400 psi

SQUARE FOOTAGE/40' ISO HC:

5,180 ft² (481 m²)

DIAMONDTRACK™

Trackout system for minimizing
the amount of dirt or sediment
tracked from job sites



SIZE:

7 ft L x 12 ft W x 3.75 in H (84 ft²)
2.13 m L x 3.66 m W x 9.53 cm H (7.8 m²)

DIAMOND HEIGHT:

2.875 in (7.3 cm)

WEIGHT:

435 lbs (197.3 kg)

LOAD CAPACITY:

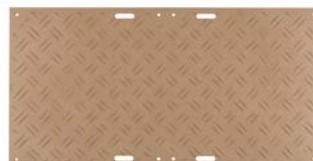
45,000 lbs per diamond / 800 psi

SQUARE FOOTAGE/40' ISO HC:

Up to 8,064 ft² (749.2 m²)

DURADECK®

Light-duty matting for
near-instant access, roadway
and equipment support



SIZE:

4 ft L x 8 ft W x .5 in H
(1.22 m x 2.4 m x 1.3 cm)

WEIGHT:

87 lbs. ea. (40 kg ea.)

LOAD CAPACITY:

Up to 80 tons / 200 psi

SQUARE FOOTAGE/40' ISO HC:

16,000 ft² (1,486 m²)



**Provide Safe Working
Conditions for Personnel**

**Stable Work Surfaces Over
Challenging Ground Conditions**

**Enhanced Tread Design
Provides Superior Traction**

STRENGTH IN BUSINESS

Signature Has Been a Global Leader in Composite Mats and Ground Protection Systems for 25 Years



IN-HOUSE ENGINEERING

In-house engineering and manufacturing to ensure superior product performance



LATEST TECHNOLOGIES

Uses latest technologies for energy-efficient manufacturing processes and sustainability



SUSTAINABLE

Product lines provide customers with a sustainable ground protection solution



ESTABLISHED REPUTATION

Established reputation as a trusted partner to rental houses worldwide



OUR COMMITMENT TO ESG

Integrated Environmental, Social, and Governance into every aspect of our business



LARGE AFTERMARKET

Large aftermarket support team is committed to customer success and exceptional service



**SIGNATURE SYSTEMS
RECYCLING PROGRAM**
VERIFIED BY AN INDEPENDENT LAB

RECYCLING PROGRAM

Signature has developed a verified Recycling Program for end of life products as part of our commitment to sustainability.





SIGNATURE SYSTEMS

Protecting the world from the ground up.



US +1 972-684-5736 | **UK** +44 1642 744990

signature-systems.com